

Decadal Agromet Bulletin of Pakistan



Highlights...

- ❖ Cold and dry weather observed during the last decade.
- ❖ Highest amount of rainfall recorded was 29.0 mm at Kalat during the last decade.
- ❖ Lowest Minimum temperature recorded was -4.0°C at Babusar during the last decade.
- ❖ Mainly cold and dry weather conditions are likely over most parts of the country, while very cold in hilly areas. Light rain/snow over hill is likely in upper Khyber Pakhtunkhwa, Kashmir & Gilgit Baltistan is also expected during the 2nd half of the decade. Moreover, fog is expected over plain areas of Punjab, Khyber Pakhtunkhwa and upper Sindh.
- ❖ Farmers are advised to take appropriate measures to protect their nurseries, crops, vegetables and orchards against the harmful impacts of the cold weather.

**NATIONAL AGROMET CENTRE (NAMC)
PAKISTAN METEOROLOGICAL DEPARTMENT
SECTOR H-8/2, ISLAMABAD**

Patron-in-Chief: *Mr. Sahibzad Khan, Director General*

Editor-in-Chief: *Ms. Asma Jawad Hashmi, Director*

Editor: *Ms. Beenish Nazakat Raja, Assistant Meteorologist*

Phone: [+92-51-9250592](tel:+92-51-9250592) Email: dirnamc@yahoo.com

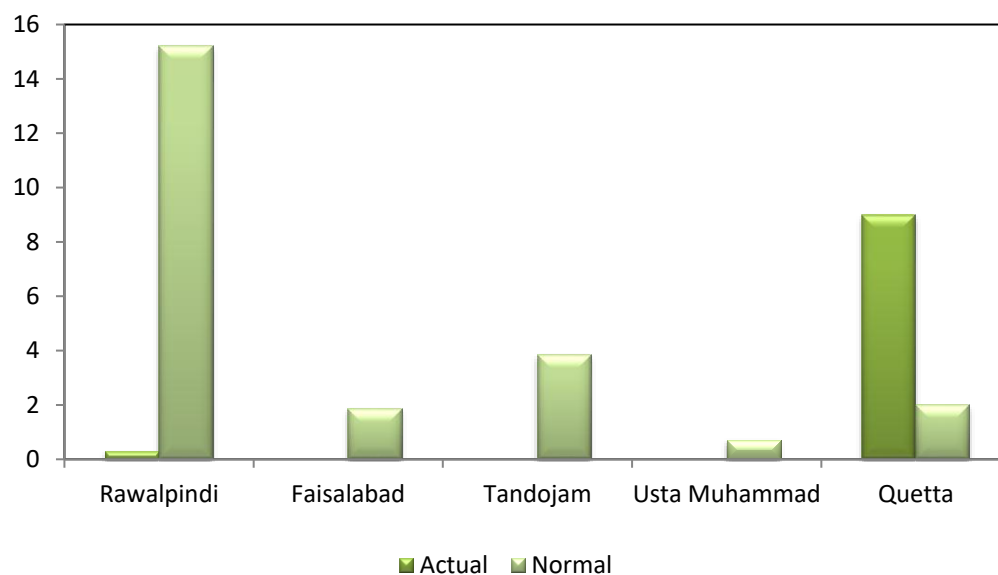
Meteorological Conditions during 2nd Decade of December 2025

Sr. No.	Station	Precipitation (mm)			Air Temperature (°C)			Soil Temperatures (°C)						R.H (%)	Sunshine Duration(hours)	Wind Speed (km/hr)	ETo (mm/day)
		Normal	Actual	Dep	Tmx Dep	Tmin Dep	Mean	5cm	10cm	20cm	30cm	50cm	100cm				
1	Rawalpindi	15.2	0.3	-14.9	2.6	0.1	13.7	13.7	13.1	12.9	13.2	14.5	17.0	69.1	36.2	0.4	0.8
2	Faisalabad	1.9	0.00	-1.9	0.8	2.7	16.1	16.3	15.9	15.6	15.9	***	19.8	72.0	33.6	1.1	1.2
3	Jhelum	4.2	0.0	-4.2	-0.8	10.4	19.6	***	14.0	14.3	14.8	16.1	***	70.0	32.4	0.4	1.0
4	Lahore	4.5	0.0	-4.5	0.7	-1.1	15.8	15.1	15.2	15.5	15.7	***	19.3	66.0	30.9	0.6	1.0
5	Sargodha	6.1	0.00	-6.1	-0.2	1.6	15.6	17.1	16.7	17.3	17.9	***	***	68.0	24.6	0.7	1.0
6	Multan	6.2	0.00	-6.2	-1.8	3.3	15.6	***	***	***	***	***	***	61.0	68.0	1.3	1.4
7	Khanpur	15.6	0.0	-15.6	1.7	1.9	16.8	***	17.4	18.1	18.5	19.3	21.6	69.0	30.0	2.0	1.7
8	Tandojam	3.9	0.0	-3.9	2.0	0.5	19.0	***	18.0	***	***	***	23.7	62.0	68.2	1.0	1.7
9	Sakrand	10.1	0.0	-10.1	3.5	1.7	17.9	21.5	19.7	19.7	20.9	22.4	***	61.0	68.0	2.6	2.2
11	Rohri	12.1	0.0	-12.1	1.9	0.8	18.3	***	***	***	***	***	***	57.9	43.4	2.6	2.0
12	D.I Khan	1.2	3.00	1.8	0.7	3.6	16.1	14.7	14.9	15.9	***	6.7	***	68.0	31.1	1.1	1.2
13	Peshawar	6.1	0.00	-6.1	1.4	0.0	14.1	12.2	12.8	13.5	14.9	16.0	20.5	68.0	8.9	1.7	1.3
14	Usta M.	0.7	0.0	-0.7	1.5	-2.0	15.5	21.1	19.7	19.7	***	***	25.1	64.0	0.0	0.4	1.1
15	Quetta	2.0	9.0	7.0	5.1	6.7	12.7	12.7	12.0	10.3	10.4	11.0	12.6	35.5	49.8	5.7	2.7
16	Skardu	12.0	0.7	-11.3	4.0	1.8	3.8	***	***	***	***	***	***	52.0	15.1	0.0	0.6
17	Gilgit	2.7	0.0	-2.7	3.8	0.8	7.5	***	***	***	***	***	***	47.4	4.5	1.8	1.1

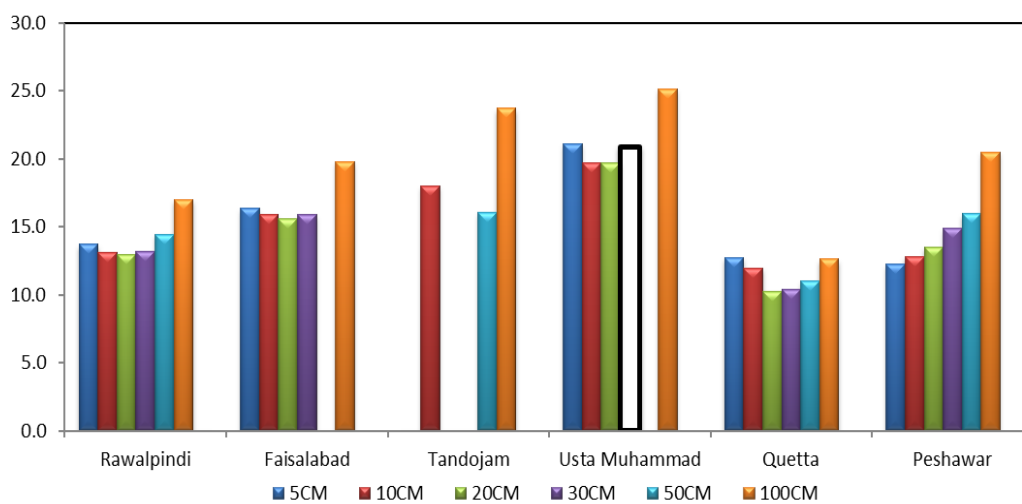
Table-1: Meteorological parameters for selected station of Pakistan. “Dep” in the table stands for difference from climatic normal, i.e. actual value minus normal. The climatic normally used in the Bulletin is extracted from the 2007 - 2016 observed data. ‘ETO’ stands for reference crop Evapotranspiration*** stands for data non-availability.

Precipitation and Soil Temperatures at RAMCs

Precipitation(mm) during 2nd Decade



Soil Temperature(°C)



* Faisalabad (50 cm) and Tandojam (5cm, 20cm & 30cm) and Usta Muhammad (50 cm) soil temperatures are not available.

Past Weather (11th to 20th December 2025)**1.1 Punjab**

Light rainfall reported from a few isolated locations. However, cold and dry weather prevailed over most parts of the province during the last decade. The decadal maximum and minimum temperatures were observed above normal by 0.4°C and 2.7°C in the province. Whereas values of relative humidity, sunshine hours, wind speed & ETo were recorded as 68%, 36.5hrs, 0.9km/hr. and 1.2 mm/day respectively.

1.2 Sindh

Cold and dry weather reported from the province during the last decade of the province. The decadal maximum and minimum temperatures were observed above normal by 2.5°C and 1.0°C in the province. Whereas values of relative humidity, sunshine hour, wind speed & ETo were recorded as 60%, 59.9 hours, 2.1km/hr., and 2.0 mm/day respectively.

1.3 Khyber Pakhtunkhwa

Light rainfall was reported from the most parts of the province during the last decade. The decadal maximum and minimum temperatures were observed above normal by 1.0°C and 1.8°C in the province. Whereas values of relative humidity, sunshine hour, wind speed & ETo were recorded as 68%, 20.0hrs, 1.4km/hr. and 1.3 mm/day respectively.

1.4 Baluchistan

Light rainfall was reported from most parts of the province, (with moderate rainfall spell recorded at Kalat valley) during the last decade. The decadal maximum and minimum temperatures were observed above normal by 3.3°C and 2.3°C in the province. Whereas values of relative humidity, sunshine hour, wind speed & ETo were recorded as 50%, 24.9 hrs, 3.1 km/hr and 1.9 mm/day respectively.

1.5 Gilgit-Baltistan and Azad Jammu & Kashmir.

Light rainfall was reported from some parts of GB and AJK during the last decade. The decadal maximum and minimum temperatures were observed above normal by 3.9°C and 1.3°C from the selected locations of the province. Whereas values of relative humidity, sunshine hour, wind speed & ETo were recorded as 50%, 9.8hrs, 0.9km/hr and 1.2 mm/day respectively.

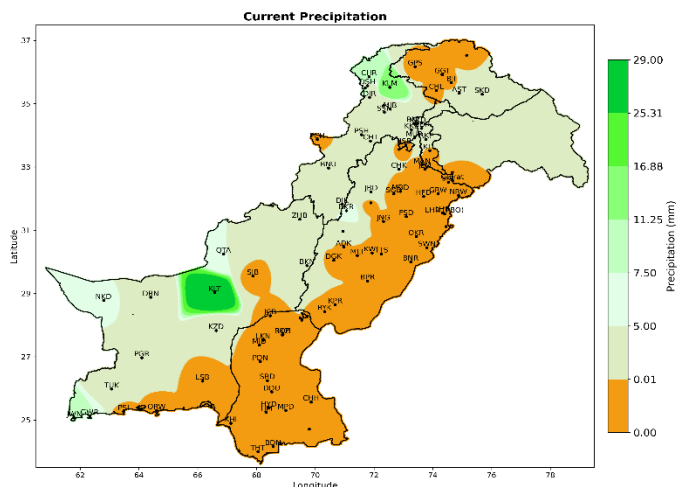
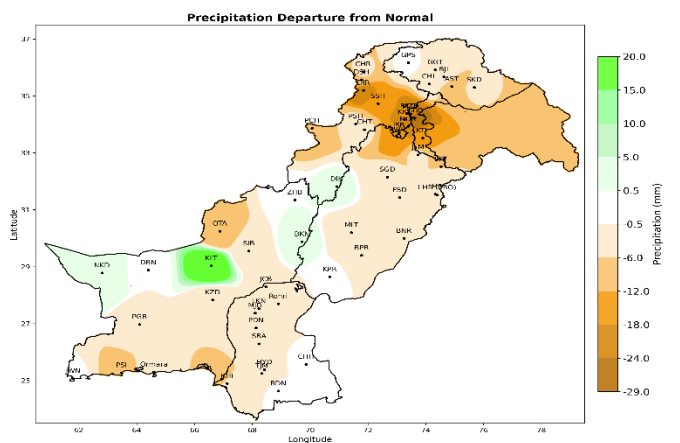
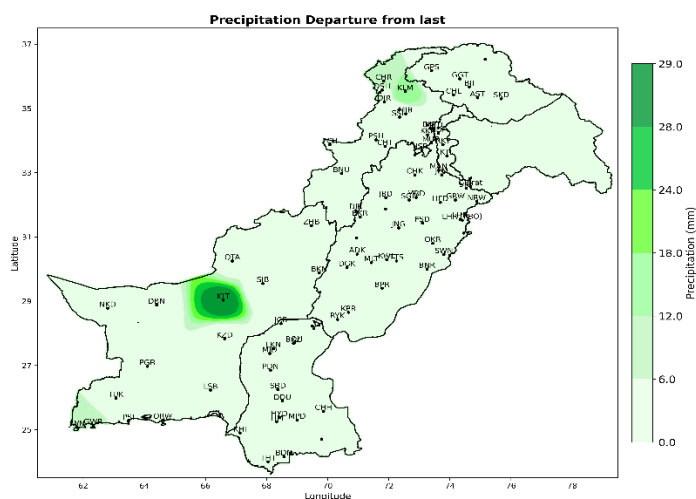
**I. Actual rainfall****II. Departure of rainfall from Normal****III. Departure of rainfall from Previous Decade**

Figure.1: Rainfall distribution during previous decade (mm)

(a) **Past Weather for Major Agricultural Plains**
(11th to 20th December 2025)

2.1 RAMC, Rawalpindi (Potohar region)

Rain was reported 0.3 mm; however, weather remained cloudy for 10 days during the decade. Average relative humidity recorded as 69%. Mean day temperature was 22.9°C while night temperature was recorded as 4.5°C with 36.2 hours of bright sunshine duration. Wind speed recorded as 0.4 km/hr with mean wind direction reported as 'South Westerly'.
No crops were reported from the station.

2.2 RAMC, Faisalabad (Central Punjab)

Dry and cold weather was observed during the decade, weather remained cloudy for 09 days. Average relative humidity recorded as 72%. Mean day temperature was 23.1°C while night temperature recorded as 9.0°C with 33.6 hours bright sunshine duration. Wind speed recorded as 1.1km/hr. with mean wind direction reported as 'Westerly'.

Wheat: Very good, Tillering.

2.3 RAMC, Tandojam (Lower Sindh)

Dry and cold weather was observed during the decade, weather remained partially cloudy for 05 day. Average relative humidity was recorded as 62%. Mean day temperature was 27.5°C while night temperature recorded as 10.4°C with 68.2 hours bright sunshine duration. Mean wind direction reported as 'North-north westerly'.

Wheat (IV-3): Good; Tillering.

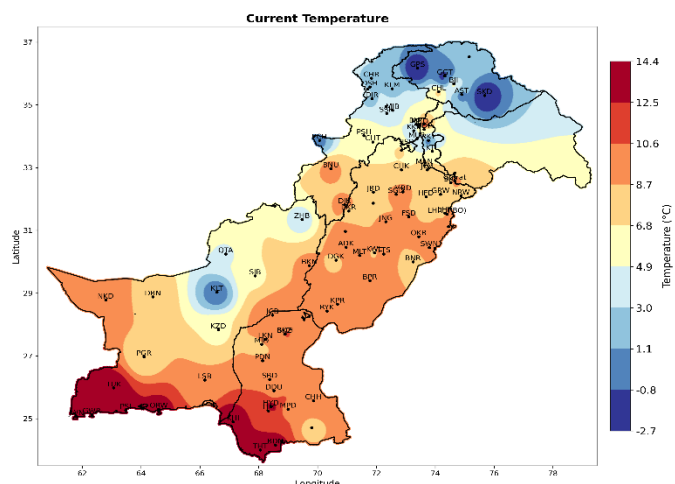
2.4 RAMC, Usta Muhammad (Eastern Baluchistan)

Dry and cold weather was observed during the decade; however, weather remained cloudy for 07 days. Average relative humidity recorded as 64%. Mean day temperature was 24.2°C while night temperature was recorded as 6.7°C. Wind speed was recorded as 0.4 km/hr. with mean wind direction recorded as 'North Easterly'.

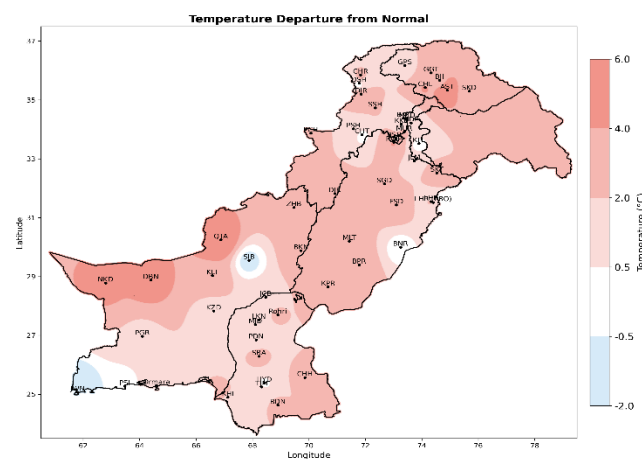
Rice: Good, Threshing.

2.5 RAMC, Quetta (Northern Baluchistan)

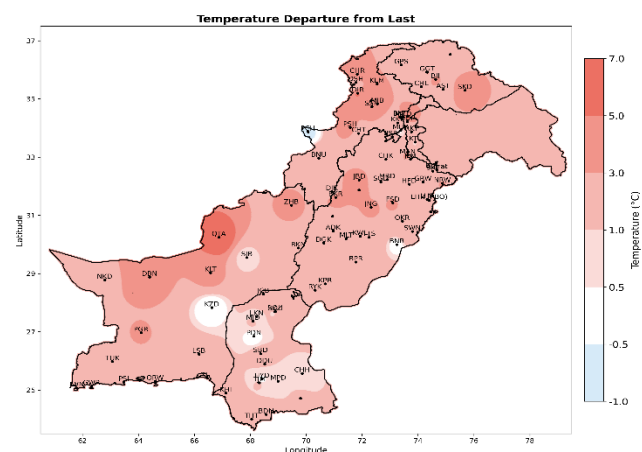
Rain was reported 9.0 mm; however, weather remained cloudy for 10 days during the decade. Average relative humidity recorded as 36%. Mean day temperature was 19.5°C while night temperature recorded as 5.9°C with 49.8 hours bright sunshine duration. Wind speed recorded as 5.7km/hr. with mean wind direction recorded as 'Southerly'.



IV. Actual min-temperature



V. Departure of min-temperature from Normal



VI. Departure of min-temperature from Previous Decade

Figure.2: Minimum Temperature distribution during previous decade (°C)

2(b) Past Weather or Sub-Regional Agricultural Plains (11th to 20th December 2025)

2.6 Jhelum

Dry and cold weather was observed during the decade; however, weather remained cloudy for 09 day. Average relative humidity recorded as 70%. Mean day temperature was 21.4°C while night temperature was recorded as 17.7°C with 32.4 hours bright sunshine duration. Wind speed recorded as 0.4 km/hr. with mean wind direction reported as 'South Westerly'.

2.7 Lahore

Dry and cold weather was observed during the decade; however, weather remained cloudy for 09 day. Average relative humidity recorded as 66%. Mean day temperature was 22.6°C while night temperature recorded as 8.9°C with 30.9 hours bright sunshine duration. Wind speed recorded as 0.6 km/hr. with mean wind direction reported as 'Westerly'.

2.8 Sargodha

Dry and cold weather was observed during the decade; however, weather remained cloudy for 08 days. Average relative humidity recorded as 68%. Mean day temperature was 22.4°C while night temperature recorded as 8.8°C with 24.6 hours bright sunshine duration. Wind speed recorded as 0.7 km/hr. with mean wind direction recorded as 'Variable'.

Wheat: Good; Tilling.

2.9 Multan

Dry and cold weather was observed during the decade; however, weather remained cloudy for 09 day. Average relative humidity recorded as 74%. Mean day temperature was 21.4°C while night temperature recorded as 9.7°C with 26.2 hours bright sunshine duration. Wind speed recorded as 1.3 km/hr with mean wind direction recorded as 'South Westerly'.

2.10 Khanpur

Dry and cold weather was observed during the decade; however, weather remained partially cloudy for 04 day. Average relative humidity recorded as 69%. Mean day temperature was 24.7°C while night temperature recorded as 8.8°C with 30.0 hours bright sunshine duration. Wind direction recorded as 'Variable'.

2.11 Sakrand

Dry and cold weather was observed during the decade; however, weather remained partially cloudy for 03 day. Average relative humidity recorded as 61%. Mean day temperature was 26.1°C while night temperature recorded as 9.7°C with 68.0 hours bright sunshine duration. Wind speed recorded as 2.6 km/hr. with mean wind direction recorded as 'Northerly'.

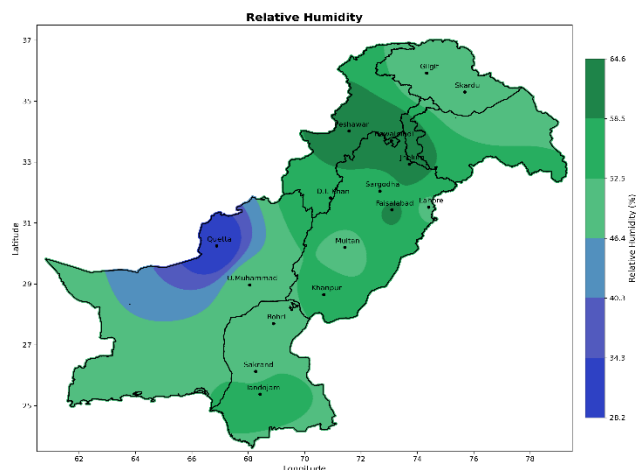


Figure.3: Relative Humidity in Percentage (%)

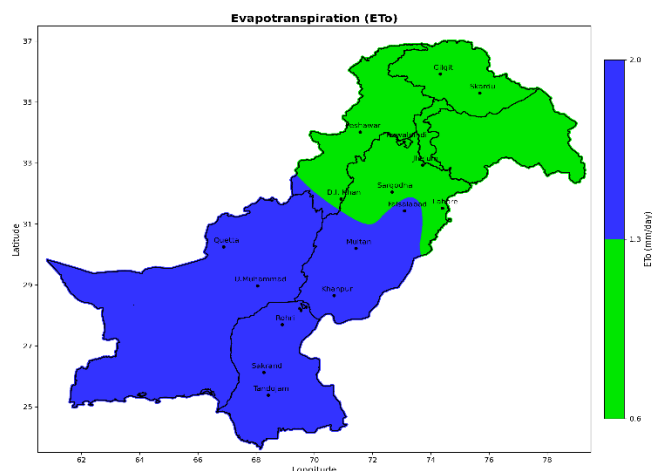


Figure.4: Reference Crop Evapotranspiration ET0 (mm/day)

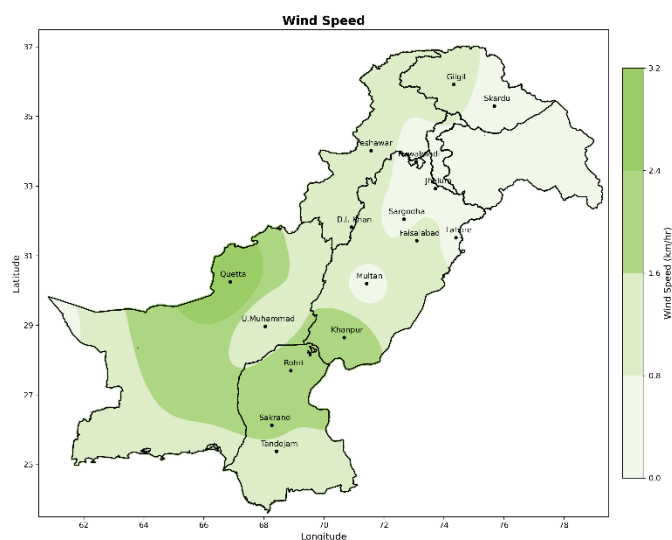


Figure 5: Wind Speed in kilometer per hour (km/h)

2.12 Rohri

Dry and cold weather was observed during the decade; however, weather remained partially cloudy for 06 days. Average relative humidity recorded as 58%. Mean day temperature was 25.2°C while night temperature recorded as 11.3°C with 43.4 hours of bright sunshine duration. Wind speed recorded as 2.6 km/hr. with mean wind direction recorded as 'North Easterly'.

No crops were reported from the station.

2.13 D.I. Khan

Rain was reported 3.0 mm; however, weather remained cloudy for 09 days during the decade. Average relative humidity was recorded as 68%. Mean day temperature was 23.2°C while night temperature recorded as 8.9°C with 31.1 hours of bright sunshine duration. Wind speed recorded as 1.1 km/hr. with mean wind direction recorded as 'South westerly'.

2.14 Peshawar

Dry and cold weather was observed during the decade; however, weather remained cloudy for 10 days. Average relative humidity was recorded as 68%. Mean day temperature was 22.0°C while night temperature was recorded as 6.2°C with 8.9 hours of bright sunshine duration. Wind speed recorded as 1.7 km/hr with mean wind direction recorded as 'North Westerly'.

2.15 Skardu

Rain was reported as 0.7 mm; however, weather remained cloudy for 09 days during the decade. Average relative humidity recorded as 52%. Mean day temperature was 10.7°C while night temperature was recorded as -3.1 °C with 15.1 hours of bright sunshine duration.

2.16 Gilgit

Dry and cold weather was observed during the decade; however, weather remained cloudy for 10 days. Average relative humidity recorded as 47%. Mean day temperature was 15.8°C while night temperature was recorded as -0.8°C with 4.5 hours of bright sunshine duration. Wind speed recorded as 1.8km/hr with mean wind direction recorded as 'South Easterly'.

Eleven Days Weather Advisory for Farmers **(21st to 31st December 2025)**

3.1 Temperature Forecast

Mean temperatures are likely to remain normal to slightly above normal over most parts of the country.

3.2 Wind Forecast

Generally, normal wind patterns may prevail in most of the agricultural plains of the country.

3.3 Rain Forecast**❖ Punjab:**

Cold and dry weather conditions are likely over most parts of the country, while very cold in hilly areas. Fog is expected over plain areas of the province.

❖ Khyber Pakhtunkhwa:

Cold and dry weather conditions are likely over most parts of the province, while very cold in hilly areas. Light rain/snow over hill is likely in upper Khyber Pakhtunkhwa during the 2nd half of the decade. Fog is also expected over plain areas of Khyber Pakhtunkhwa during the decade.

❖ Sindh:

Cold and dry weather is expected in the province during the decade. Fog is also expected over the plain areas of upper Sindh.

❖ Baluchistan:

Cold and dry weather is expected in the province during the decade.

❖ Gilgit-Baltistan:

Cold and dry weather is expected in the province during the decade. Light rain/snow over hill is likely in most parts during the 2nd half of the decade.

❖ Kashmir:

Mainly cold and dry weather is expected during the decade. Light rain/snow over hill is also likely in most parts during the 2nd half of the decade.

3.4 Advisory for Farmers

Farmers are advised to take appropriate measures to protect their nurseries, crops, vegetables and orchards against the harmful impacts of the cold weather.