



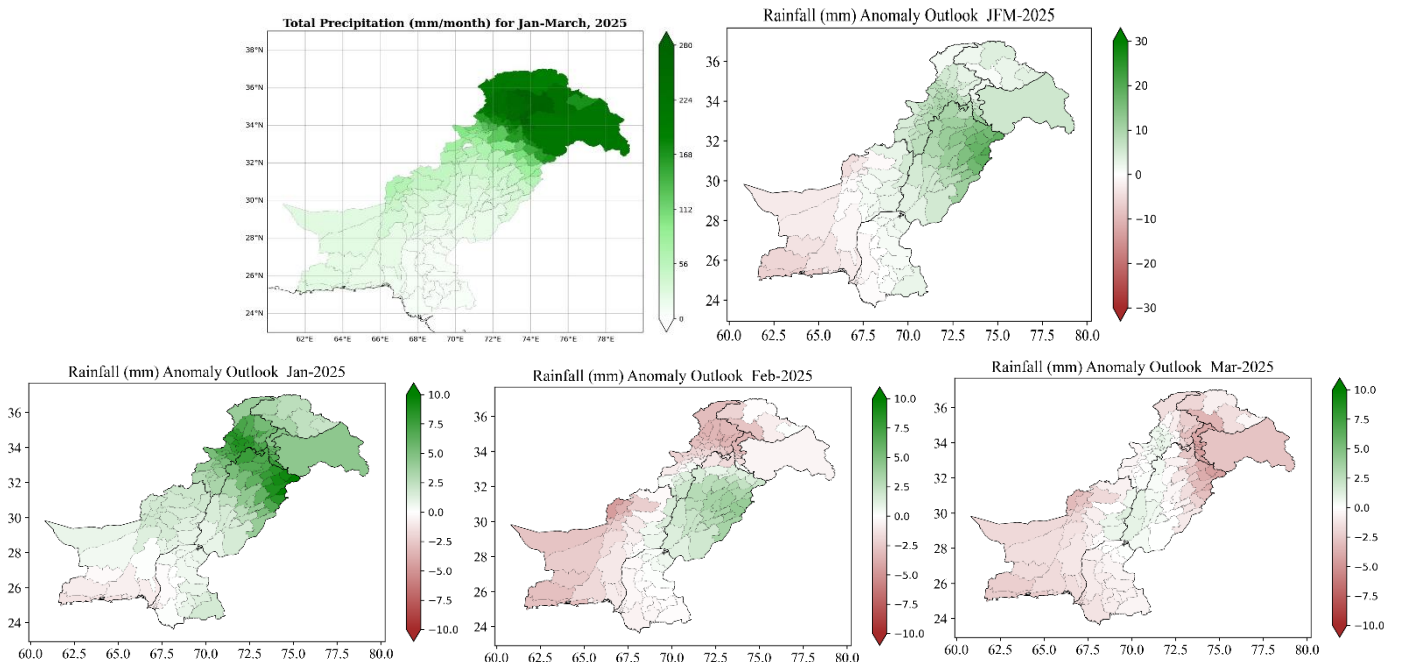
Tel: +92-51-9250592
Fax: +92-51-9250368

Seasonal Agro-Climat Outlook for January–March 2025

Brief Introduction

Pakistan Meteorological Department issues monthly and seasonal forecasts at the end of each month using global climate models. As a result, a single model and single data set are not considered reliable for prediction and forecast for a longer period, therefore models developed by different institutes and different data sets are being used for accuracy along with different boundary conditions for each model output. At present, 13 recommended models are adopted to obtain multi-model ensembles for seasonal predictions.

Seasonal Projections (Precipitation)



Normal to above normal precipitation is likely over most parts of the country during the next three months January-March 2025. However, below normal rainfall is expected in western belt of Sindh and western/southern parts of Balochistan.



Tel: +92-51-9250592
Fax: +92-51-9250368

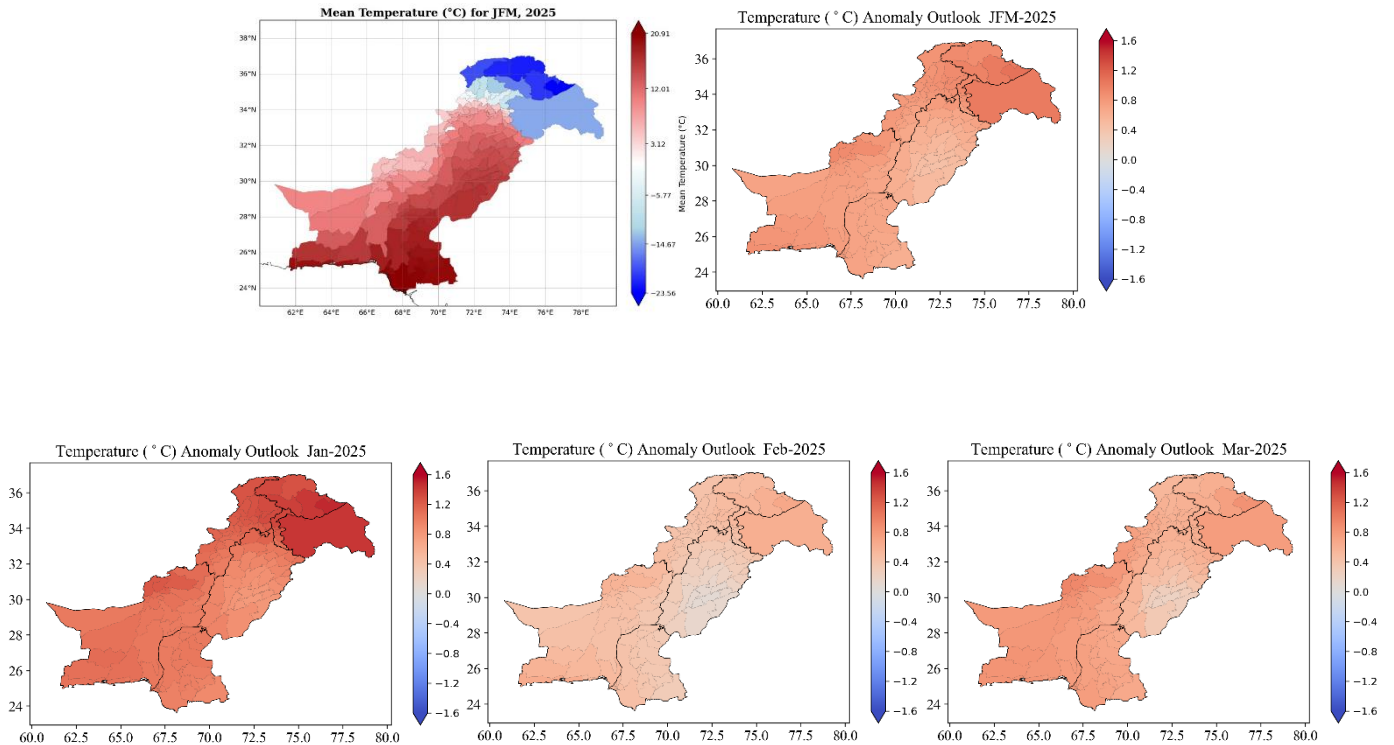
Month Wise Situation (Precipitation)

- Normal to above normal precipitation is likely over most parts of the country. However normal to below normal in western parts of Sindh and southern parts of Baluchistan during January 2025.
- During February 2025 mostly normal to below normal precipitation is expected over the country, whereas above normal rainfall is likely in Punjab and surrounding areas of Sindh and Khyber Pakhtunkhwa.
- Mostly normal to below-normal precipitation is likely over the country in March, whereas above normal over western parts of Punjab and at a few adjoining areas of upper Sindh, Khyber Pakhtunkhwa and northeast Baluchistan.



Tel: +92-51-9250592
Fax: +92-51-9250368

Seasonal Projections (Mean Air Temperature)



A tendency of above-normal mean temperature is likely over most parts of the country during the next three months (January-March 2025).



Tel: +92-51-9250592
Fax: +92-51-9250368

Month Wise Situation (Temperature)

- During January 2025, above-normal mean temperature is likely in most parts of the country.
- Normal to above normal temperature is expected during the month of February and March in most parts of the country.



Tel: +92-51-9250592
Fax: +92-51-9250368

Advisories for Farmers Based on the Recent and Expected Weather conditions

- Mainly dry weather/below normal rainfall reported during post monsoon months (Sep-Dec) in most parts of the country. However, soil moisture is expected to improve to some extent during Jan-Mar due to expected rainfall during the next three months.
- Mean daily temperature is likely to rise above normal during the period in most parts of the country. However, a gradual seasonal change in temperature during the next three months, below normal rainfall (snowfall on hills) are expected in most parts of the country, especially in the upper regions.
- Judicious use of available water stock is recommended for most of the agricultural plains of the country due to expected above normal temperature in the following months.