



Tel: +92-51-9250592
Fax: +92-51-9250368

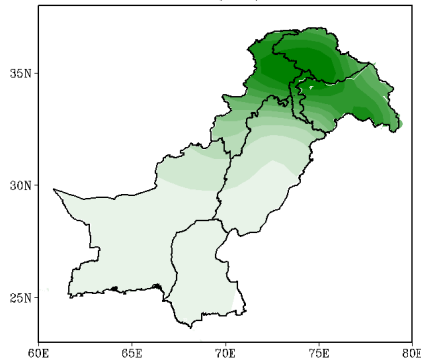
Seasonal Agro-Climat Outlook for March-May 2024

Brief Introduction

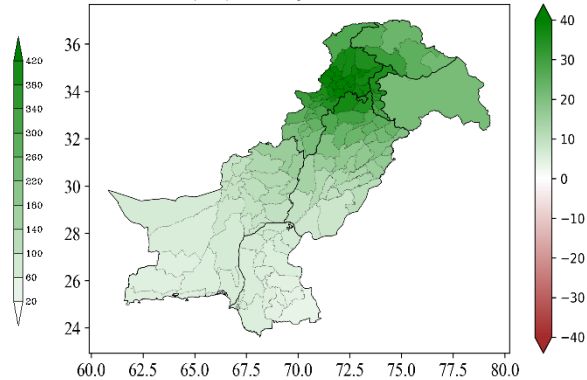
Pakistan Meteorological Department issues monthly and seasonal forecasts at the end of each month using global climate models. As a result, a single model and single data set are not considered reliable for prediction and forecast for a longer period, therefore models developed by different institutes and different data sets are being used for accuracy along with different boundary conditions for each model output. At present, 13 recommended models are adopted to obtain multi-model ensembles for seasonal predictions.

Seasonal Projections (Precipitation)

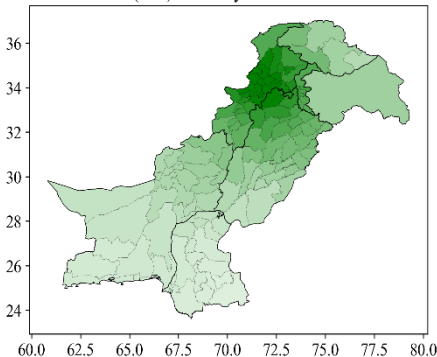
Total Rainfall (mm), MAM 2024



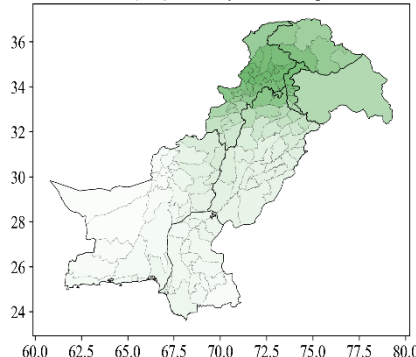
Rainfall (mm) Anomaly Outlook MAM-2024



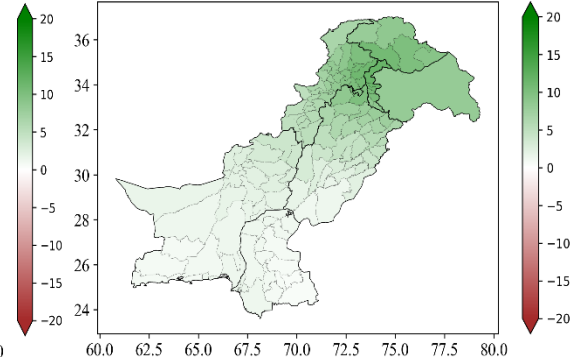
Rainfall (mm) Anomaly Outlook Mar-2024



Rainfall (mm) Anomaly Outlook Apr-2024



Rainfall (mm) Anomaly Outlook May-2024



A tendency of normal to slightly above normal precipitation is likely over most parts of the country during the next three months (MAM), particularly in Khyber Pakhtunkhwa, Azad Jammu Kashmir and Potohar region.



Tel: +92-51-9250592
Fax: +92-51-9250368

Month Wise Situation

- During March 2024, nearly normal precipitation is likely over most parts of the country while slightly above-normal in the northwestern parts.
- In April 2024, nearly normal precipitation is likely over most parts of the country.
- Almost normal rainfall is likely over most parts of the country during May 2024.



PAKISTAN METEOROLOGICAL DEPARTMENT

National Agromet Center

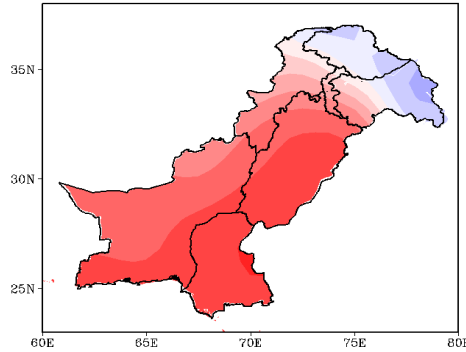
H-8/2, Islamabad

Tel: +92-51-9250592

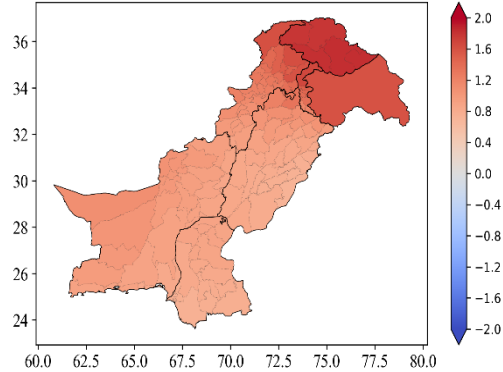
Fax: +92-51-9250368

Seasonal Projections (Mean Air Temperature)

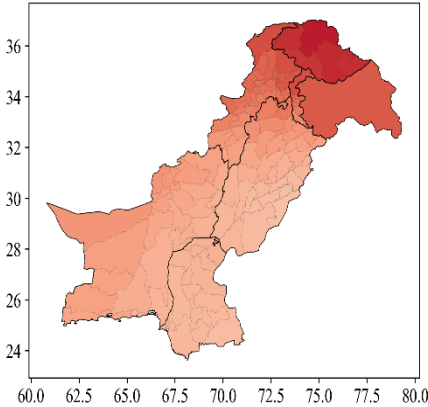
Mean Temperature (°C), MAM 2024



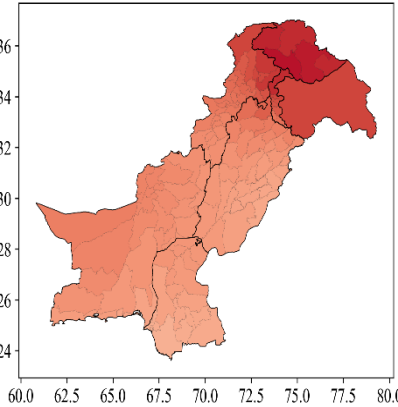
Temperature (°C) Anomaly Outlook MAM 2024



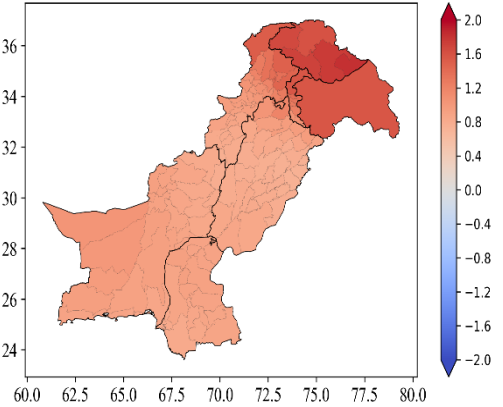
Temperature (°C) Anomaly Outlook Mar 2024



Temperature (°C) Anomaly Outlook Apr 2024



Temperature (°C) Anomaly Outlook May 2024



A tendency of nearly normal to slightly above-normal mean temperature is likely over most parts of the country particularly in the northern area during the period (MAM).



PAKISTAN METEOROLOGICAL DEPARTMENT

National Agromet Center

H-8/2, Islamabad

Tel: +92-51-9250592

Fax: +92-51-9250368

Month Wise Situation

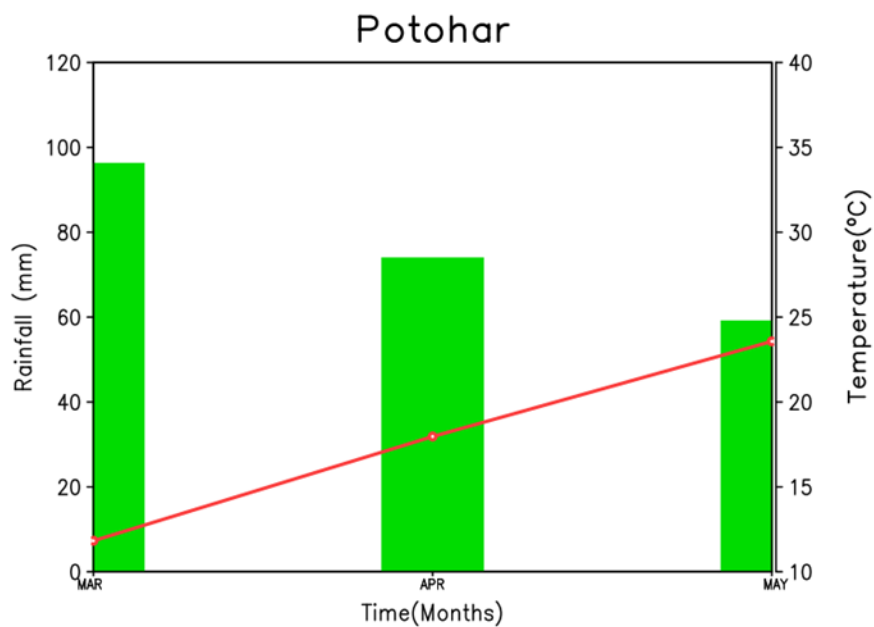
- During the next three months (March, April and May 2024), nearly normal to slightly above-normal mean temperature is likely over most parts of the country particularly Gilgit-Baltistan, upper KP and adjoining areas of Kashmir.



Tel: +92-51-9250592

Fax: +92-51-9250368

Outlook for Agroclimatic Zones

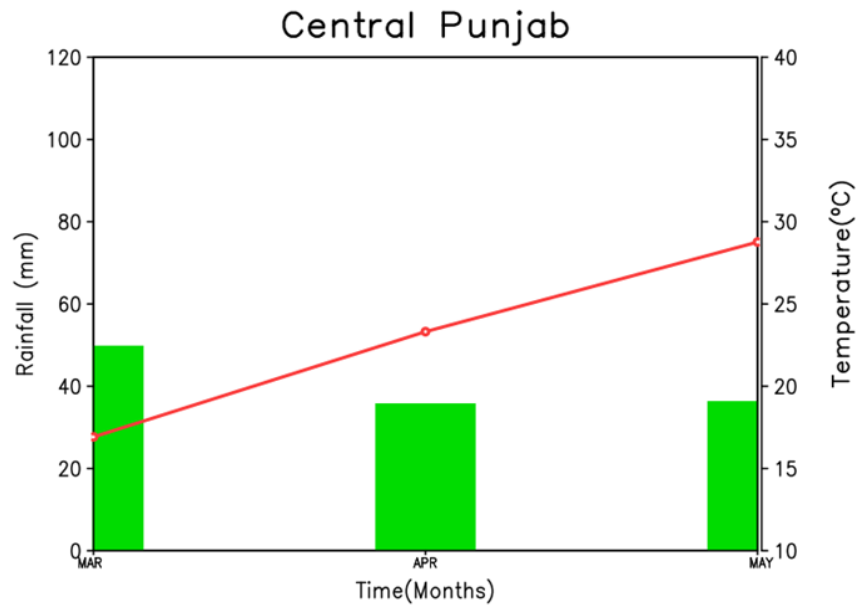


The **Potohar Region** is expected to receive a favorable amount of precipitation during the specified period (MAM), especially in March. The mean temperature is expected to increase gradually following the seasonal pattern.

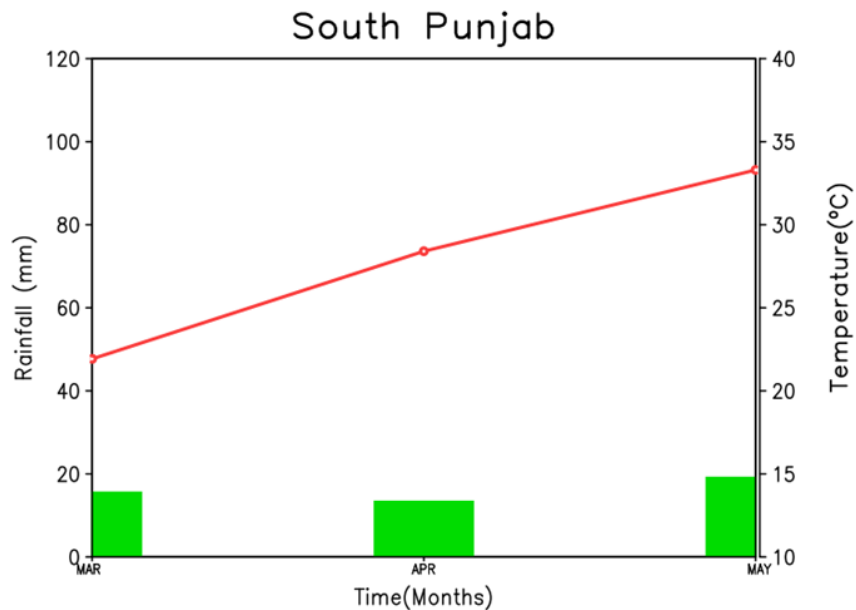


Tel: +92-51-9250592

Fax: +92-51-9250368



Central Punjab is expected to receive considerable rainfalls during the next three months period (MAM). The mean temperature is projected to rise as per seasonal norms.

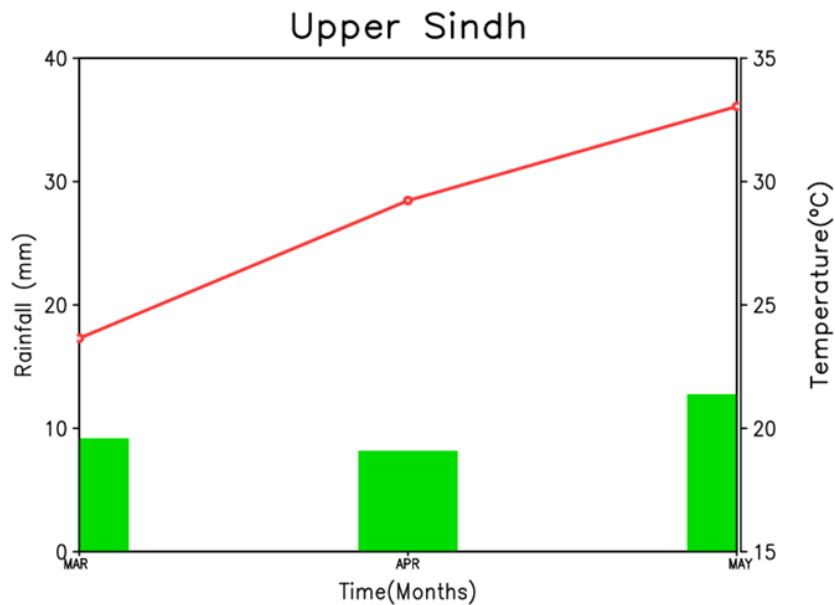


Southern Punjab is expected to receive fewer rainfalls during the mentioned period (MAM). The mean temperature is expected to rise gradually following the seasonal norms.

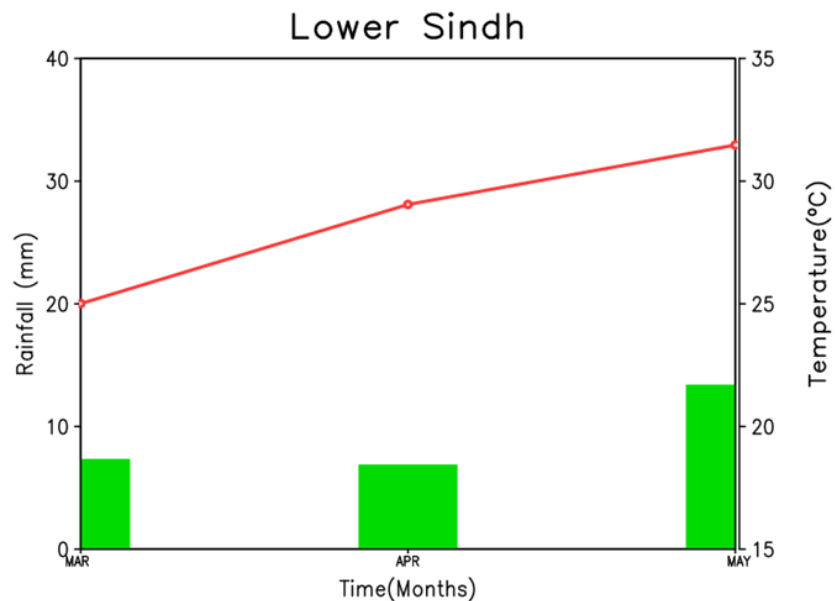


Tel: +92-51-9250592

Fax: +92-51-9250368



Upper Sindh is expected to receive a few rainfalls during the mentioned period (MAM). The mean temperature is expected to increase steadily following the seasonal pattern.

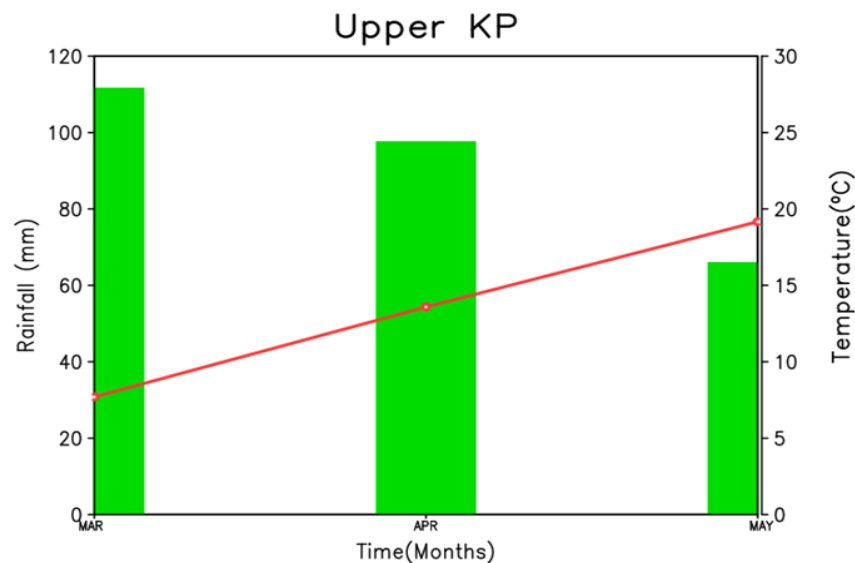


Similarly, **Lower Sindh** may receive very few rains during the specified period (MAM). The mean temperature is expected to increase gradually as per seasonal pattern.

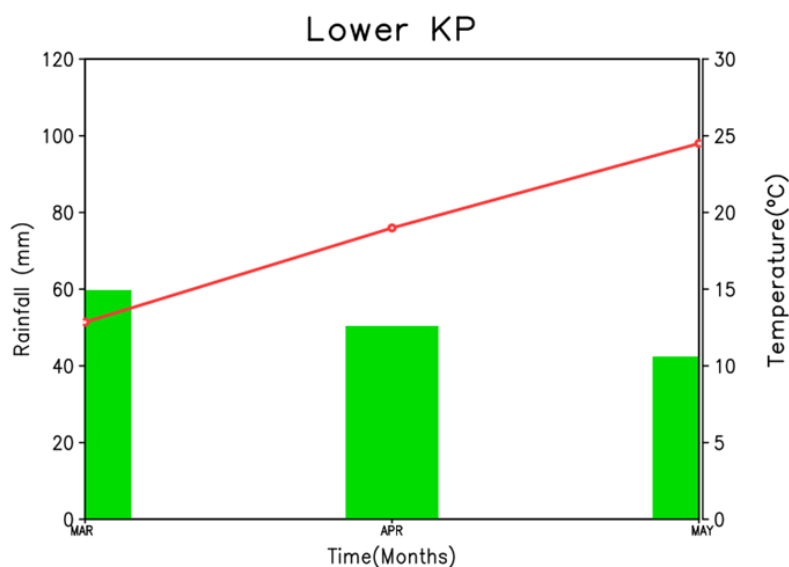


Tel: +92-51-9250592

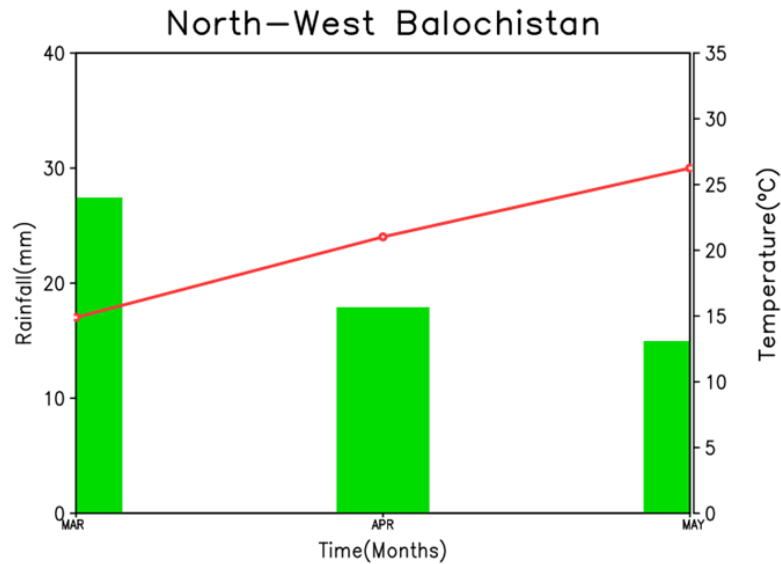
Fax: +92-51-9250368



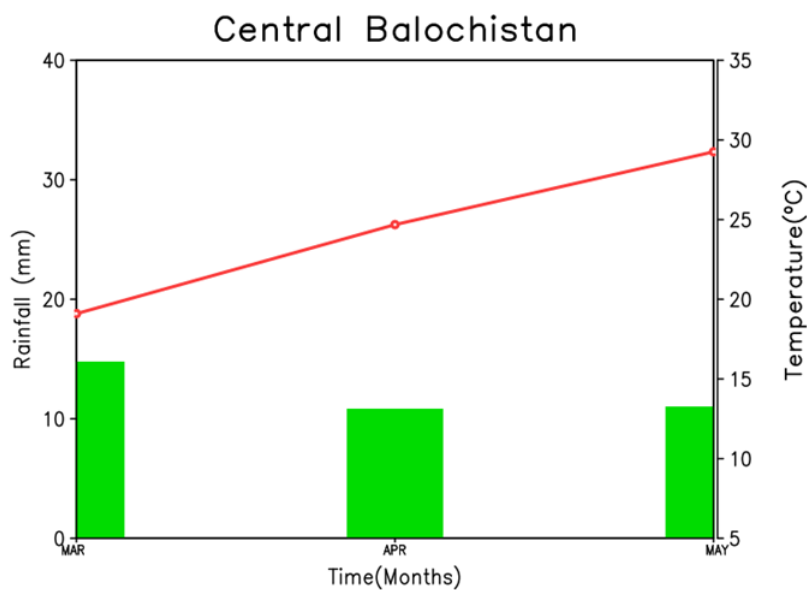
Upper Khyber Pakhtunkhwa may receive a favorable amount of precipitation throughout the period (MAM) particularly in March. The mean temperature is expected to increase gradually following the seasonal norms.



Lower Khyber Pakhtunkhwa may comparatively receive fewer amount of precipitation during the period (MAM). The mean temperature is expected to rise gradually as per seasonal pattern.



North-Western Balochistan may receive low amount of precipitation throughout the period (MAM). The mean temperature is expected to rise following the seasonal pattern.

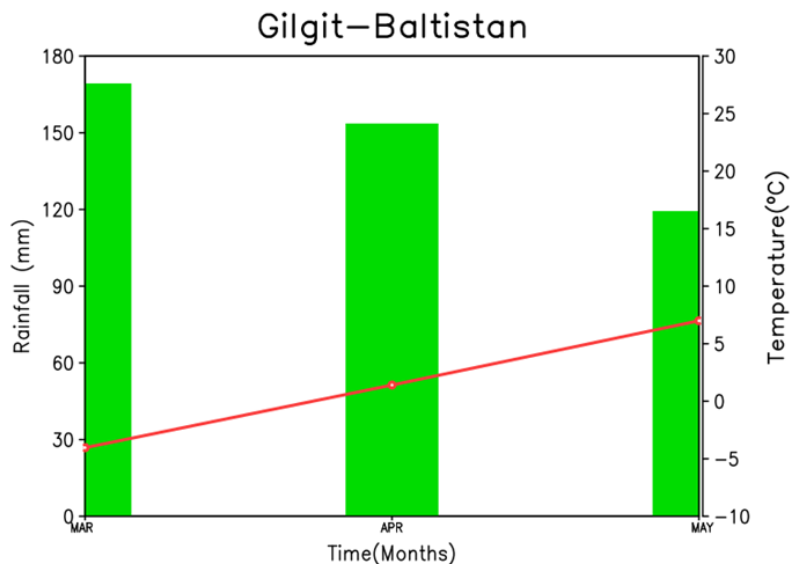


Central Balochistan is expected to receive fewer rainfalls during the period (MAM). The mean temperature is expected to increase gradually as per seasonal norms.

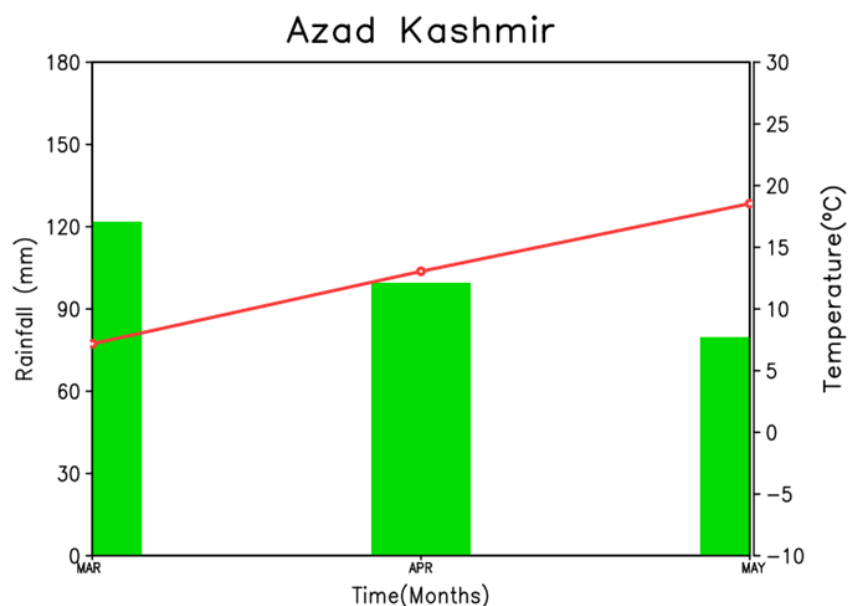


Tel: +92-51-9250592

Fax: +92-51-9250368



Gilgit Baltistan is expected to receive a favorable amount of precipitation throughout the period (MAM), especially during March and April. The mean temperature is expected to increase steadily following the seasonal pattern.



Azad Jammu Kashmir would also receive a considerable amount of precipitation during the period (MAM). The mean temperature is expected to increase gradually as per seasonal norms.



Advisories for Farmers Based on the Recent and Expected Weather conditions

At present, the major agricultural soils (particularly in the upper half) hold a considerable moisture based on the recently prevailed weather conditions. Accordingly, the standing crops and vegetable/orchards have been growing with almost satisfactory pace in most parts of the country. However, isolated wind/thunder/hailstorm along with light to moderate precipitation particularly in the upper half has affected the seasonal crops, vegetables and orchard.

During the next three months (MAM), in addition to seasonal increase in temperatures, normal to slightly above normal rains (along with snow over the high mountains) are expected in the country especially over the upper parts.

March is an important month in terms of final stages for Rabi crops especially Wheat in most parts of the country. Therefore, farmers may remain vigilant to protect their standing crops, vegetables, orchard and livestock from the harmful impacts of expected weather conditions. Besides, farmers of lower half may plan the harvesting of their crops keeping in view the weather forecasts.