

Weekly Weather and Crop Bulletin for Pakistan

**NATIONAL AGROMET CENTRE
PAKISTAN METEOROLOGICAL
DEPARTMENT SECTOR H-8/2,
ISLAMABAD.**

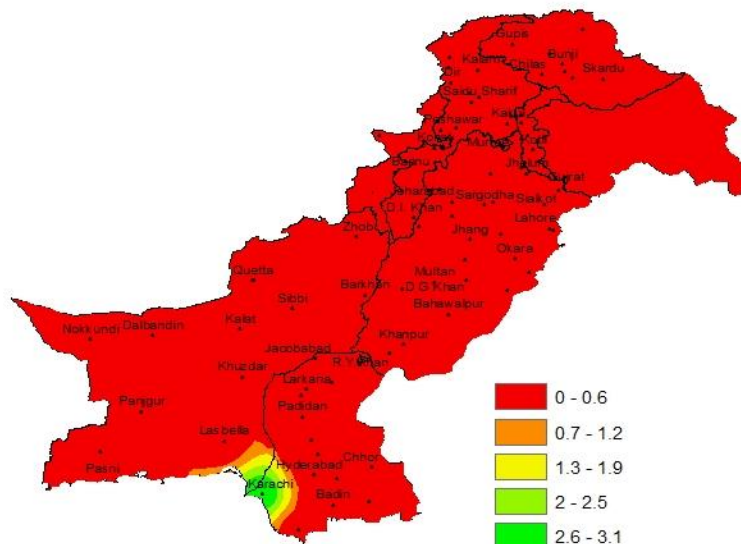
Phone: +92-51-9250299

Email: dirnamc@yahoo.com

**Rainfall Distribution (mm) during the
Previous Week (from 18th to 24th Jan, 2016)**

Contents

Highlights of past weather (General)	1-2
Past weather for Agri Plains	3-4
Crop progress	4
Min Temperature maps	5
R.H and GDD	6
Wind speed maps	7
Cloudiness maps	8
Farmers advisory	9
National data for selected stations	10-12



Highlights of Past Weather (from 18th to 24th Jan, 2016)

Mainly normal day time temperature was reported from most parts of the country during the week.

Province wise distribution of rainfall reported as follows:

- Light rainfall reported at isolated places in Khyber Pakhtunkhwa, Sindh and Gilgit-Baltistan & Kashmir regions.
- Dry weather was reported in Balochistan and Punjab.

Patron-in-Chief: Dr. Ghulam Rasul (Director General)

Chief Editor: Ch. Muhammad Aslam (Director)

Editor: Asma Jawad Hashmi (Deputy Director)

Past Weather of Provinces (from 18th to 24th Jan, 2016)

Punjab

Dry weather was reported in Punjab during the week. Weekly maximum and minimum temperatures recorded 13.5°C & 5.1°C respectively. For the present season average 25.1 growing degree days accumulated by the end of last week. Average relative humidity recorded 80% and wind speed in the morning/evening recorded 0.9/1.5Knots. During the previous week the lowest minimum temperature recorded -1.0°C at Murree.

Sindh

Light rainfall reported only at single station (Karachi=3.1mm) in Sindh during the week. Weekly maximum and minimum temperatures recorded 21.9°C & 8.3°C respectively. For the present season average 63.0 growing degree days accumulated by the end of last week. Average relative humidity recorded 68% and wind speed in the morning/evening recorded 2.0/3.5Knots. During the previous week the lowest minimum temperature recorded 1.5°C at Mithi.

Khyber Pakhtunkhwa

Light rainfall reported only at single station (Risalpur=0.1mm) in Khyber Pakhtunkhwa province during the week. Weekly maximum and minimum temperatures recorded 14.7°C & 0.4°C respectively. For the present season average 10.4 growing degree days accumulated by the end of last week. Average relative humidity recorded 57% and wind speed in the morning/evening recorded 1.8/2.9Knots. During the previous week the lowest minimum temperature recorded -7.0°C at Kalam.

Balochistan

Dry weather was reported in Balochistan during the week. Weekly maximum and minimum temperatures recorded 21.9°C & 4.3°C respectively. For the present season average 52.7 growing degree days accumulated by the end of last week. Average relative humidity recorded 47% and wind speed in the morning/evening recorded 1.9/3.3Knots. During the previous week the lowest minimum temperature recorded -5.5°C at Quetta.

Gilgit-Baltistan and Azad Jammu & Kashmir

Light rainfall reported only at single station (Chilas=0.1mm) in Gilgit-Baltistan & Kashmir regions during the week. Weekly maximum and minimum temperatures recorded 11.9°C & -3.0°C respectively. Average relative humidity recorded 57% and wind speed in the morning/evening recorded 0.8/2.4Knots. During the lowest minimum temperature recorded -12.3°C at Skardu.

**Past Weather for Major Agricultural Plains
(from 18th to 24th Jan, 2016)****Rawalpindi (Potohar region)**

Dry weather was reported during the week; however cloudiness in the morning/evening recorded 0.0/1.9Oktas while, average relative humidity observed 83%. Mean night time temperature recorded 4.5°C & for the present season 33.3 growing degree days accumulated by the end of last week. Wind speed recorded in the morning/evening as 0.0/0.6Knots.

Faisalabad (Central Punjab)

Dry weather was reported during the week; however cloudiness in the morning/evening recorded 6.1/4.3Oktas while, average relative humidity observed as 83%. Mean night time temperature recorded 5.3°C & for the present season 26.1 growing degree days accumulated by the end of last week. Wind speed recorded in the morning/evening as 0.5/0.9Knots.

Tandojam (Lower Sindh)

Dry weather was reported during the week; however cloudiness in the morning/evening recorded 0.0/0.0Oktas while, average relative humidity observed as 64%. Mean night time temperature recorded 8.4°C & for the present season 78.5 growing degree days accumulated by the end of last week. Wind speed recorded in the morning/evening as 0.3/0.9Knots.

Quetta (Northern Balochistan)

Dry weather was reported during the week; however cloudiness in the morning/evening recorded 0.6/1.0Oktas while, average relative humidity observed as 29%. Mean night time temperature recorded -2.9°C & for the present season 3.6 growing degree days accumulated by the end of last week. Wind speed recorded in the morning/evening as 0.6/2.8Knots.

Usta Muhammad (Eastern Balochistan)

Dry weather was reported during the week; however cloudiness in the morning/evening recorded 1.4/1.4Oktas while, average relative humidity observed as 76%. Mean night time temperature recorded 5.4°C & for the present season 52.0 growing degree days accumulated by the end of last week. Wind speed recorded in the morning/evening as 1.7/1.7Knots.

**Past Weather for Sub-Regional Agricultural
Plains (from 18th to 24th Jan, 20 16)****Multan**

Dry weather was reported during the week; however cloudiness in the morning/evening recorded 3.9/1.6Oktas while, average relative humidity observed as 83%. Mean night time temperature recorded 5.8°C & for the present season 30.1 growing degree days accumulated by the end of last week. Wind speed recorded in the morning/evening as 1.1/2.3Knots.

Lahore

Dry weather was reported during the week; however cloudiness in the morning/evening recorded 7.3/4.7Oktas while, average relative humidity observed as 83%. Mean night time temperature recorded 6.7°C & for the present season 27.4 growing degree days accumulated by the end of last week. Wind speed recorded in the morning/evening as 0.6/0.3Knots.

Zhob

Dry weather was reported during the week however cloudiness in the morning/evening recorded 0.0/0.3Oktas while, average relative humidity observed as 39%. Mean night time temperature recorded -1.6°C & for the present season 24.5 growing degree days accumulated by the end of last week. Wind speed recorded in the morning/evening as 5.0/5.0Knots.

D.I. Khan

Dry weather was reported during the week; however cloudiness in the morning/evening recorded 8.0/1.9Oktas while, average relative humidity observed as 79%. Mean night time temperature recorded 2.2°C & for the present season 21.0 growing degree days accumulated by the end of last week. Wind speed recorded in the morning/evening as 0.9/0.9Knots.

Peshawar

Dry weather was reported during the week; however cloudiness in the morning/evening recorded 5.0/3.7Oktas while, average relative humidity observed as 84%. Mean night time temperature recorded 3.3°C & for the present season 20.2 growing degree days accumulated by the end of last week. Wind speed recorded in the morning/evening as 0.3/0.3Knots.

Murree

Dry weather was reported during the week; however cloudiness in the morning/evening recorded 0.6/0.3Oktas while, average relative humidity observed as 38%. Mean night time temperature recorded 2.5°C & for the present season 15.1 growing degree days accumulated by the end of last week. Wind speed recorded in the morning/evening 2.6/0.3Knots.

Kalam

Dry weather was reported during the week; however cloudiness in the morning/evening recorded 1.0/1.0Oktas while, average relative humidity observed as 58%. Mean night time temperature recorded -5.0°C by the end of last week. Wind speed recorded in the morning/evening 0.0/0.0Knots.

Gilgit

Dry weather was reported during the week; however cloudiness in the morning/evening recorded 0.0/1.1Oktas while, average relative humidity observed as 65%. Mean night time temperature recorded -4.9°C by the end of last week. Wind speed recorded in the morning/evening as 1.6/0.3Knots.

Skardu

Dry weather was reported during the week; however cloudiness in the morning/evening recorded 1.9/1.1Oktas while, average relative humidity observed as 75%. Mean night time temperature recorded -10.8°C by the end of last week. Wind speed recorded in the morning/evening as 0.0/0.0Knots.

Crop Situation for Major Agricultural Plains
(Based on data from Regional Agromet Centres)**Potohar Region (Rawalpindi)**

There is presently one crop (irrigated condition) grown in the fields of RAMC Rawalpindi.

Wheat: Good condition at *Third Leaf* stage.

Central Punjab (Faisalabad)

There is presently one crop (irrigated condition) grown in the fields of RAMC Faisalabad.

Wheat: Very Good condition at *Tillering* stage Completed.

Lower Sindh (Tandojam)

There is presently one crop (irrigated condition) grown in the fields of RAMC Tandojam.

Wheat: Good condition at *Shooting* stage.

Northern Balochistan (Quetta)

There is presently one crop (irrigated condition) grown in the fields of RAMC Quetta.

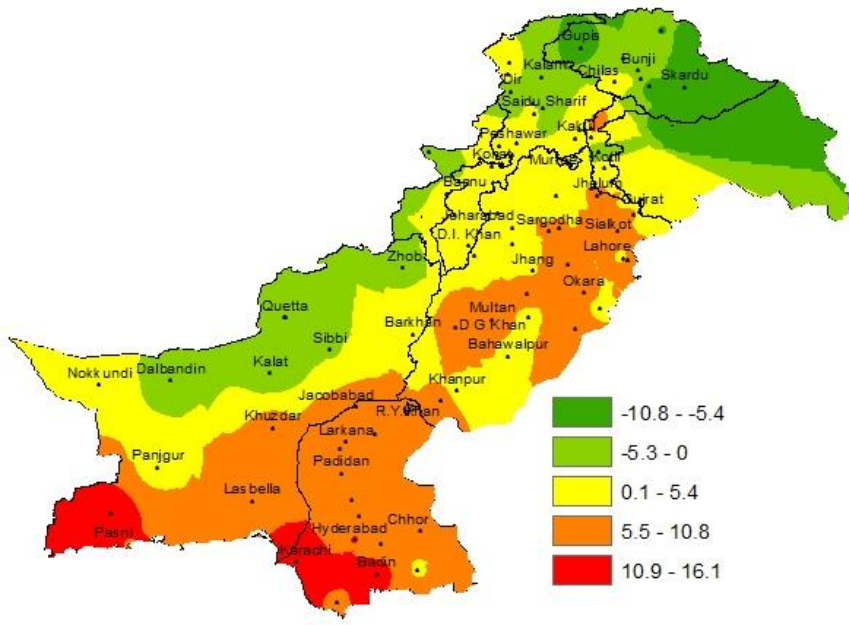
Wheat: Good condition at *Third Leaf* stage.

Eastern Balochistan (Usta Muhammad)

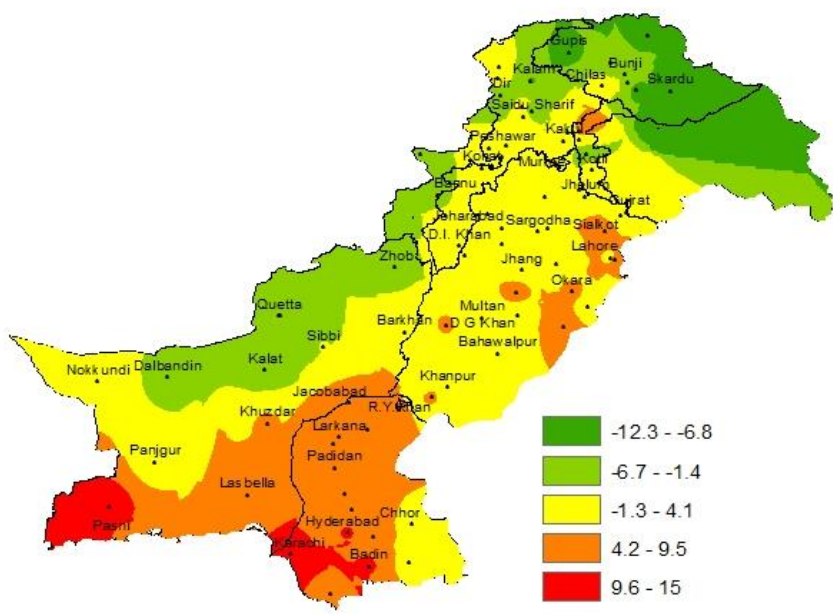
There is presently one crop (irrigated condition) grown in the fields of RAMC Usta Muhammad.

Wheat: Good condition at *Stem extension* stage.

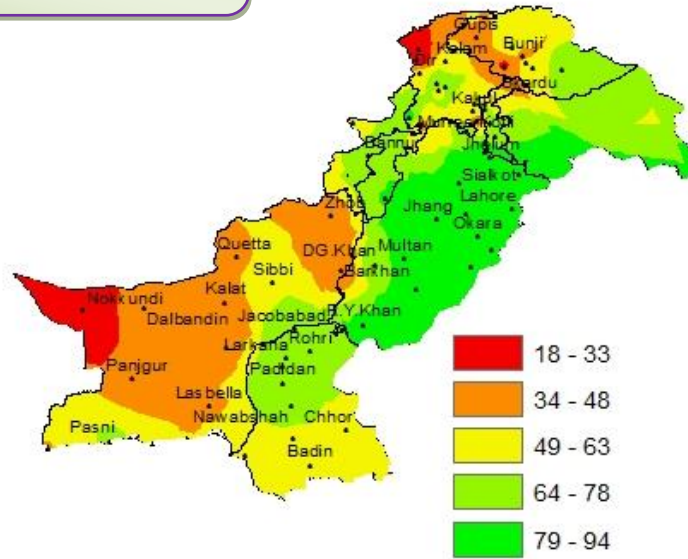
Mean Minimum Temperature (°C) during the Previous week (from 18th to 24th Jan, 20 16)



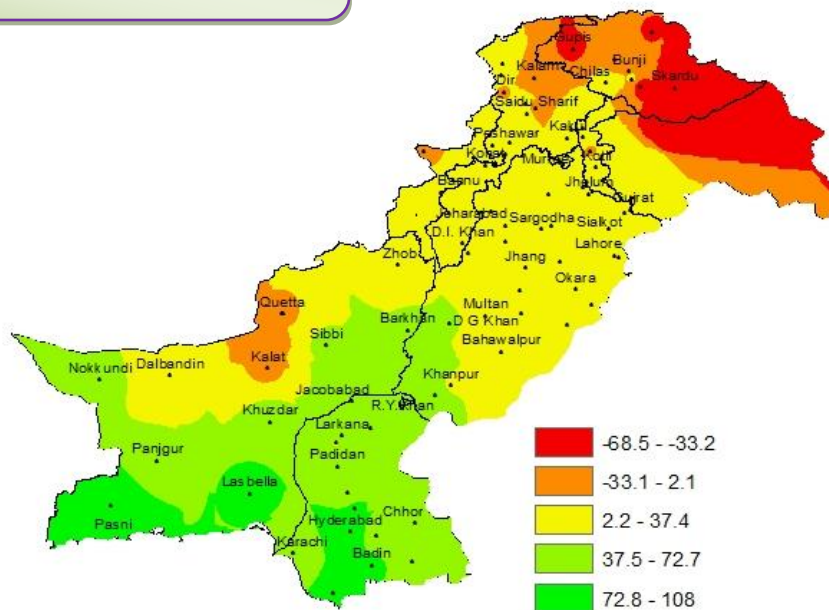
Lowest Minimum Temperature (°C) during the Previous week (from 18th to 24th Jan, 20 16)



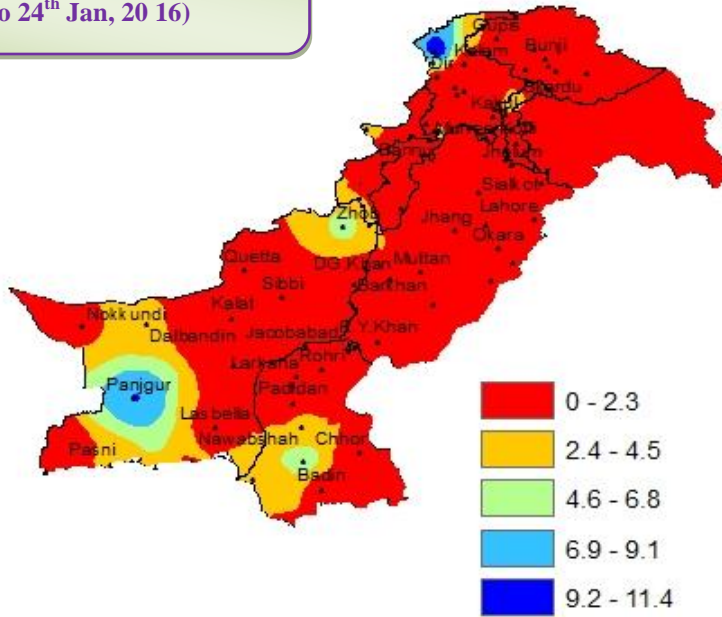
Mean Relative Humidity (%) during the Previous week (from 18th to 24th Jan, 20 16)



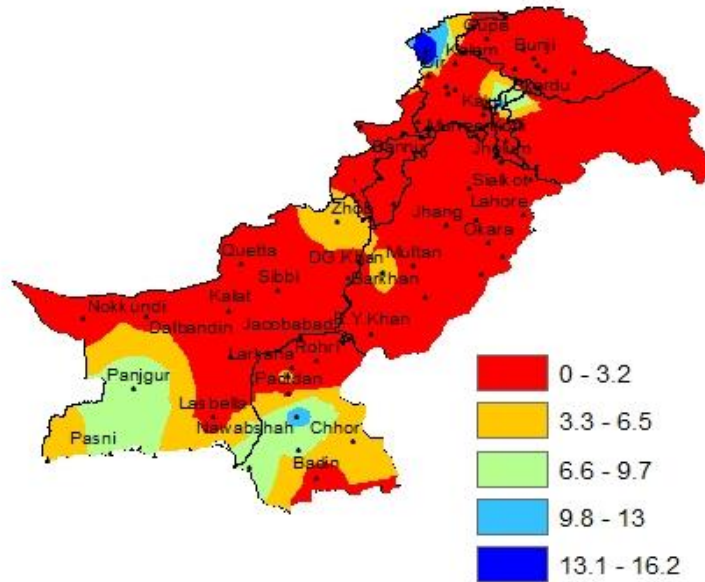
Total Growing Degree Days accumulated during the Previous week (from 18th to 24th Jan, 20 16)



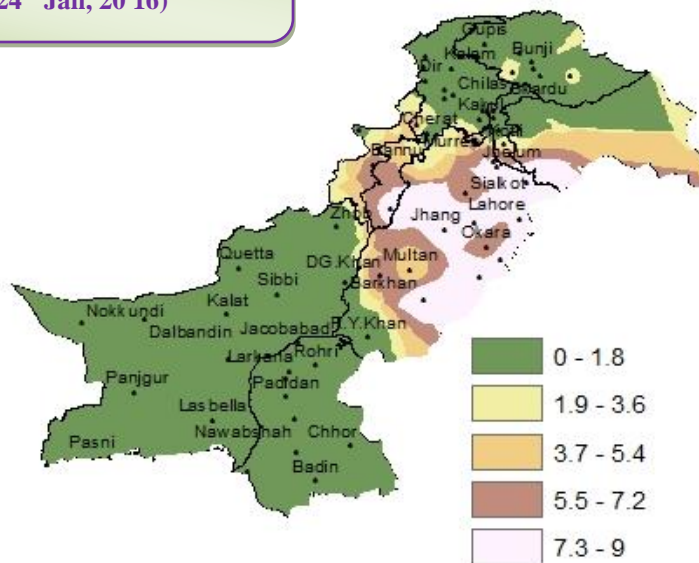
Mean Wind Speed (Knots) at 0800 PST during the Previous week (from 18th to 24th Jan, 20 16)



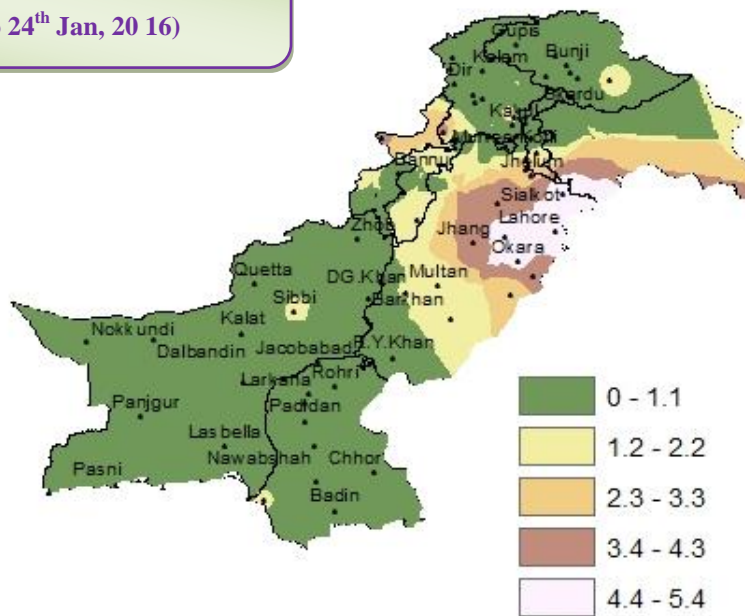
Mean Wind Speed (Knots) at 1700 PST during the Previous week (from 18th to 24th Jan, 20 16)



Mean Cloudiness (Oktas) at 0800PST during the Previous week (from 18th to 24th Jan, 20 16)



Mean Cloudiness (Oktas) at 1700PST during the Previous week (from 18th to 24th Jan, 20 16)



Weekly Weather Advisory for Farmers**(From 25th to 31st Jan, 2016)**

Continental air would prevail over most parts of the country during next few days. A fresh western disturbance is likely to enter western parts of the country on Wednesday and likely to grip upper parts of the country on Thursday.

MONDAY**25-01-2016**

Mainly cold & dry weather is expected in most parts of the country. Dense Foggy conditions are likely to continue over plain areas of Punjab, Peshawar division and upper Sindh during night & morning hours.

TUESDAY**26-01-2016**

Mainly cold & dry weather is expected in most parts of the country. Dense Foggy conditions are likely to continue over plain areas of Punjab, Peshawar division and upper Sindh during night & morning hours.

WEDNESDAY**27-01-2016**

Mainly cold & dry weather is expected in most parts of the country. However, light rain (with light snowfall over the hills) is expected at isolated places in Malakand, Zhob divisions, upper FATA and Gilgit-Baltistan. Foggy conditions are likely to prevail over plain areas of Punjab, Peshawar division and upper Sindh during night & morning hours.

THURSDAY**28-01-2016**

Rain (with snowfall over the hills) is expected at scattered places in KP, FATA, Islamabad, upper Punjab (Sargodha, Rawalpindi, and Gujranwala divisions), Quetta, Zhob, Kalat divisions, Gilgit-Baltistan and Kashmir. Cold and dry weather is expected in other parts of the country.

FRIDAY**29-01-2016**

Rain (with snowfall over the hills) is expected at scattered places in KP, FATA, Islamabad, upper Punjab (Sargodha, Faisalabad, Rawalpindi, Gujranwala, and Lahore divisions), Quetta, Zhob divisions, Gilgit-Baltistan and Kashmir. Cold and dry weather is expected in other parts of the country.

SATURDAY**31-01-2016**

Mainly cold and dry weather is expected in most parts of the country. Rain (with snowfall over the hills) is expected at isolated places in Malakand, Hazara, Gujranwala divisions, Gilgit-Baltistan and Kashmir.

ADVISES FOR CROPS

- ❖ Farmers of irrigated areas should irrigate the crop as per requirement keeping expected rain forecast in mind. Normally first irrigation is given 20-25 days after sowing and 2nd irrigation is given just before heading stage and the 3rd irrigation is given at milk maturity stage.
- ❖ Farmers of barani areas are advised to remove weeds from the fields, so that the present soil moisture may fully be utilized.
- ❖ Removing weeds from the standing crops is very important as weeds utilize moisture and food which may be utilized by the crop. As a result considerable loss in yield occurs every year. However operations against weeds should be started using weedicides or manually when the crop completely covers the fields.
- ❖ Falling leaves from the trees negatively affect standing Rabi crops like wheat and other Rabi crops. Farmers should collect leaves from the crops as early as possible so that crop normal growth may not be disturbed.
- ❖ Farmers of upper areas are advised to protect their crops from the expected frost during clear nights.

National Weather Data of Selected Cities
(Weekly Data from 18th to 24th Jan, 20 16)

Stations	Minimum/Night Temperature (°C)		Growing Degree Days	Relative Humidity (%)	Rainfall (mm)	Cloudiness (Oktas) 0800PST	Cloudiness (Oktas) 1700PST	Wind Speed (Knots) 0800PST	Wind Speed (Knots) 1700PST
	Mean	Lowest							
Astore	-8.6	-10.0	-57.0	52	0	1.9	1.0	1.1	1.4
Badin	12.9	10.0	76.3	57	0	0.6	0.0	0.9	2.0
Bahawalnagar	6.7	6.0	32.4	89	0	8.0	2.1	0.0	0.6
Bahawalpur	5.2	2.9	25.0	82	0	8.0	1.9	1.4	0.9
Balakot	0.4	-0.6	22.7	59	0	0.9	1.4	0.0	0.4
Bannu	0.5	-2.0	16.5	74	0	5.7	0.4	0.0	0.9
Barkhan	4.1	2.5	40.8	33	0	0.0	0.0	0.0	0.9
Bunji	-0.4	-1.7	-2.3	40	0	1.9	1.0	0.3	0.0
Cherat	3.5	3.0	18.3	43	0	0.6	0.3	2.6	2.3
Chhor	6.0	3.0	55.3	57	0	0.0	0.4	0.3	3.7
Chilas	2.5	1.5	18.5	31	0.1	2.0	1.0	0.3	1.4
Chitral	0.6	0.0	11.7	30	0	0.9	0.0	11.4	14.6
D.I.Khan	2.2	1.0	21.0	79	0	8.0	1.9	0.9	0.9
Dalbandin	-2.4	-3.0	21.8	35	0	0.0	0.3	2.6	2.9
DG.Khan	6.8	4.3	38.7	73	0	7.0	1.1	1.7	4.3
Dir	-4.2	-5.0	-1.3	56	0	0.9	0.6	0.0	1.7
Drosh	1.8	1.0	14.1	18	0	0.3	0.4	6.0	14.3
Faisalabad	5.3	1.0	26.1	83	0	6.1	4.3	0.5	0.9
Garidopatta	1.3	0.5	29.0	69	0	0.6	0.7	0.0	1.4
Gawader	12.5	11.5	96.3	55	0	0.0	0.0	0.0	6.3
Gilgit	-4.9	-6.5	-17.3	65	0	1.6	0.3	0.0	1.1
Gupis	-7.0	-8.0	-40.5	45	0	0.9	0.9	1.7	1.4

Hyderabad	10.9	10.0	90.0	61	0	0.0	0.0	5.7	6.9
Islamabad	3.4	0.5	24.4	73	0	5.9	1.0	0.0	0.9
Jacobabad	6.9	6.0	70.3	74	0	1.5	0.4	0.9	0.9
Jhang	5.3	2.0	25.3	80	0	8.0	3.7	0.3	0.3
Jhelum	6.0	2.8	30.3	81	0	7.7	3.4	0.6	1.1
JWN	16.1	15.0	108.0	47	0	0.0	0.4	2.0	6.3
Kakul	0.0	-1.0	13.7	59	0	0.6	1.0	0.0	1.4
Kalam	-5.0	-7.0	-19.0	58	0	1.0	1.0	0.0	0.0
Kalat	-2.4	-4.0	-7.3	43	0	0.0	0.0	0.0	0.0
Karachi	13.0	10.5	54.0	57	3.1	0.4	1.1	3.1	8.3
Khanpur	5.0	2.8	36.4	82	0	0.0	0.4	2.6	2.6
Khuzdar	6.9	4.5	57.3	41	0	0.0	0.0	0.0	0.0
Kotli	2.7	1.7	30.8	72	0	2.6	1.1	0.0	2.4
Lahore	6.7	5.2	27.4	83	0	7.3	4.7	0.6	0.3
Larkana	8.6	6.5	63.6	68	0	0.0	0.7	1.7	2.3
Lasbella	8.4	7.0	82.9	47	0	0.9	0.0	1.4	2.9
Lower Dir	0.0	-0.8	18.6	71	0	0.7	0.4	0.6	1.4
M.B Din	5.7	3.5	27.0	87	0	6.7	4.0	0.3	1.7
Malam Jabba	-1.9	-2.5	-16.8	63	0	0.3	0.4	1.7	0.6
Mangla	5.4	3.9	28.2	84	0	7.3	2.7	0.0	2.0
Mir Khani	-0.4	-1.2	12.0	54	0	0.0	0.7	0.0	2.0
Moinjodaro	6.1	5.0	34.0	75	0	0.0	0.0	1.4	3.7
Multan	5.8	1.5	30.1	83	0	3.9	1.6	1.1	2.3
Murree	2.5	-1.0	15.1	38	0	0.6	0.3	2.6	0.3
Muzaffarabad	1.8	1.0	27.4	63	0	0.3	0.6	0.3	0.3
Nawabshah	7.6	6.0	60.0	70	0	1.3	0.0	2.9	11.4

Nokkundi	3.1	2.5	42.8	28	0	0.0	1.0	1.7	2.0
Okara	5.8	4.9	25.1	84	0	5.6	4.7	1.7	1.1
Padidan	7.1	6.0	58.3	72	0	0.0	0.4	1.3	2.9
Panjgur	3.3	0.5	43.5	34	0	0.0	0.0	9.1	9.7
Parachinar	-3.9	-5.0	-5.1	50	0	1.3	3.4	3.0	3.0
Pasni	10.6	8.5	85.3	66	0	0.0	0.1	3.1	6.9
Pattan	9.9	9.0	20.7	46	0	0.0	0.9	5.1	17.0
Peshawar	3.3	0.3	20.2	84	0	5.0	3.7	0.3	0.3
Quetta	-2.9	-4.0	3.6	29	0	0.6	1.0	0.6	2.8
R.Y.Khan	5.8	4.2	41.9	82	0	0.0	0.0	1.7	2.3
Rawalakot	-3.8	-5.5	-4.8	65	0	0.9	0.6	0.0	0.0
Rawalpindi	4.5	2.5	33.3	83	0	0.0	1.9	0.0	0.6
SAHIWAL	5.0	2.5	22.1	92	0	8.9	3.7	0.6	1.7
Saidu Sharif	0.8	0.0	15.8	61	0	0.6	0.7	0.0	0.0
Sialkot	5.9	3.0	21.8	94	0	8.0	5.4	0.0	0.3
Sibbi	-0.1	-1.3	49.1	61	0	0.0	1.1	0.0	0.0
Skardu	-10.8	-12.3	-68.5	75	0	1.9	1.1	0.0	0.0
Tandojam	8.4	7.0	78.5	64	0	0.0	0.0	0.3	0.9
Usta.M	5.4	4.0	52.0	76	0	1.4	1.4	1.7	1.7
Zhob	-1.6	-4.0	24.5	39	0	0.0	0.3	5.0	5.0

*** Shows that data was not available.